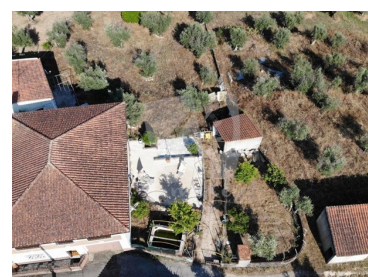






Proença-a-nova e Peral - Villa



 5 Bedrooms
  2 Bathrooms
  320 Area (m²)
  2439 Land Area (m²)
  Garage

180 000 €
(EUR €)

Vivenda das Rosas - Beautiful countryside property with 2 houses and big outdoor area

Welcome to the typical Portuguese village of Pernadas where you will find the tranquility of the countryside and breathtaking views on the surrounding hills. You have access via the paved village street.

This beautiful property consists of two houses with 2439 m² of land with a completely walled and fenced garden, fruit trees, vines and olive trees and a separate annex with three divisions for storage or agricultural use. There is a gravel car parking area with space for 3 cars and agricultural land with water connection in place. Mains water and electricity are installed and you can comfortably move in.

The main house

The main house has a footprint of 122m² and is composed of five bedrooms, two bathrooms, dining

T +351 934 850 145 (mobile call) · T +351 274834036 (fixed call) · E info@homekeyportugal.com

Rua Principal s/n, Santo André das Tojeiras
AMI 15569

¹ (Call to national fixed network) | ² (Call to national mobile network)



and living room, kitchen, garage converted into a workshop, storage room under the staircase and an attic area for storage or even to convert into other divisions. High ceilings leave you with a spacious feeling and the windows let plenty of natural light in. The house is well taken care of and does not require major renovations.

On the ground floor, the entrance and ample hallway (8m long) give access to the living and dining room, the workshop garage, storage under the staircase, one bedroom, one full bathroom and the kitchen. The woodburner in the hallway provides you with heating during the winter months.

The stairs lead you up to the first floor with another long hallway from where you can get to the front balcony with countryside and village views. There are 2 bedrooms to the front, one full bathroom, and 2 bedrooms to the back which both have access to the balcony with garden and countryside views. The attic is currently used for storage, the roof is in good condition.

Mains water and electricity are connected. As for sewage, a soakaway system is in place.

Stepping out of the kitchen you will find a beautiful stone terrace for relaxing or outdoor dining. On this back terrace you can enjoy the morning and early afternoon sun. From here you can also get into the second house.

The second house

The second house, accessible from the shared rear terrace of the main house or the garden, still lacks some interior finishes, although some work has already been done to convert it into a comfortable modern living space. It is prepared to accommodate two bedrooms, bathroom, open plan kitchen and living room on 80 m2 over 2 floors.

Outside

Enjoy the garden views from either the south-facing or the back terrace of the house, or the lower terrace in front of the second house. You will find orange, lemon, pomegranate and olive trees and vines. There is ample space in the garden for outdoor activities, setting up an above-ground swimming pool, making your vegetable plot... An additional registered 17m2 building with bread oven is perfect for your summer kitchen and barbecues. The land around the two houses is entirely fenced and walled and thus ideal for safety having dogs or children.

The property also features a deep borehole with pump, and a water storage tank.

An outbuilding next to the main property, consisting of 3 divisions and a former chicken coop, offers more opportunities for storage and keeping animals. Electricity is installed. The bordering meadowland across the dirt track can either be used for agriculture or animals.

Property location

This property also stands out for its location, being at the end of a small village, it allows not only a lot of privacy but also unobstructed views over beautiful landscapes. The property is also located about 10 minutes from the town of Proença-a-Nova, which has almost all public and private services, as well as several stunning river beaches.

Measurements

Annex divisions 3.7m x 2.0m / 3.7m x 3.8m / 3.7m x 2.0m

Summer kitchen/bread oven building 3.1m x 4.1m

Main house

Entrance hallway 8.4m long

T +351 934 850 145 (mobile call) · T +351 274834036 (fixed call) · E info@homekeyportugal.com

**Rua Principal s/n, Santo André das Tojeiras
AMI 15569**

¹ (Call to national fixed network) | ² (Call to national mobile network)



Workshop/Garage 3.4m x 5.0m
Bathroom ground floor 2.7m x 1.8m
Bedroom ground floor 3.4m x 4.0m
Living/ dining 7.0m x 3.8m
Kitchen 3.8m x 4.2m
Upper bathroom 1.8m x 3.6m
Upper bedroom front 4.0m x 4.3m
Upper bedroom front 3.8m x 4.0m
Front balcony 9.3m long
Upper bedroom back 3.8m x 4.0m
Upper bedroom back 2 4.0m x 4.3m
Back balcony 9.8m long

Second house

Future bedrooms: both 2.6m x 5.0m
Future kitchen and dining 2.6m x 6.6m
Shower 0.95m x 1.12m
Bathroom with WC and sink 1,4m x 2,0m
Living area and staircase 2.1m x 3.8m

If you are looking for a calm and relaxing space, please get in touch for more information and viewing appointments!

T +351 934 850 145 (mobile call) · T +351 274834036 (fixed call) · E info@homekeyportugal.com

**Rua Principal s/n, Santo André das Tojeiras
AMI 15569**

¹ (Call to national fixed network) | ² (Call to national mobile network)



Property Features

- Washing machine
- Fitted wardrobes
- Equipped kitchen
- Sealed land area
- Proximity: Mountain, Open field
- Floors: 3
- Views: Countryside views, Mountain views, Garden view
- Borehole
- Barbecue
- Solar orientation: South, West
- Terrace
- Access: Tarmac Road
- Dishwashing machine
- Wood burner
- Garden
- Quiet Location
- Built year: 1989
- Storage / utility room
- Guest cottage
- Septic tank
- Energetic certification: E
- Mains water
- Garage
- Mains electricity

T +351 934 850 145 (mobile call) · T +351 274834036 (fixed call) · E info@homekeyportugal.com

**Rua Principal s/n, Santo André das Tojeiras
AMI 15569**

¹ (Call to national fixed network) | ² (Call to national mobile network)