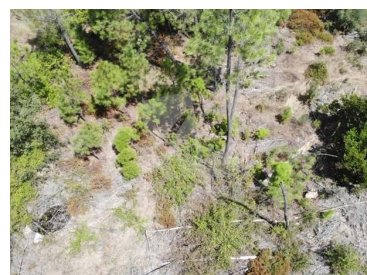




## Sarzedas - Rural land



Land Area (m²)

**5 445 €**

(EUR €)

## Corujeira - Your idyllic slice of nature with three wells

Discover 4200 m2 of rustic land and make them your place to enjoy nature.

Coming from the N233, you access to the property by a well-maintained dirtroad. At the entrance you will find some pine trees to create shade or use the wood for other purposes. The land is mostly flat, its vegetation consists of reed along a seasonal stream, pines, bushes, brambles and quince.

3 wells provide you with water for irrigation for your off-grid project. Thanks to good sun exposure you will be able to make use of solar panels. You can place a temporary structure on this property.

In only 15 minutes you reach Castelo Branco.

Interested in seeing the place yourself? Contact us for more information or to schedule a viewing!

T +351 934 850 145 (mobile call) · T +351 274834036 (fixed call) · E [info@homekeyportugal.com](mailto:info@homekeyportugal.com)

Rua Principal s/n, Santo André das Tojeiras  
AMI 15569

<sup>1</sup> (Call to national fixed network) | <sup>2</sup> (Call to national mobile network)



## Property Features

- Quiet Location
- Views: Countryside views
- Access: Dirtroad
- Proximity: Public Transport
- Well

**T +351 934 850 145 (mobile call) · T +351 274834036 (fixed call) · E [info@homekeyportugal.com](mailto:info@homekeyportugal.com)**

**Rua Principal s/n, Santo André das Tojeiras  
AMI 15569**

<sup>1</sup> (Call to national fixed network) | <sup>2</sup> (Call to national mobile network)